

Erskine Commons Outlot Prime Retail Space For Lease

South Bend, Indiana

- Join this growing retail trade area on the south side
- Signalized outlot of the new Wal-Mart Super Center & Lowe's
- Located at intersection of US 31 (Michigan St) & Ireland
- In line space available from 1,500 sq. ft.
- Rates from \$24.00 PSF NNN



Join Verizon Wireless



UP TO 4,700 SF AVAILABLE

Demographics

Average HH Income

1 mile \$51,027
3 mile \$54,347
5 mile \$48,565

Estimated Population

1 mile 4,491
3 mile 45,776
5 mile 128,190

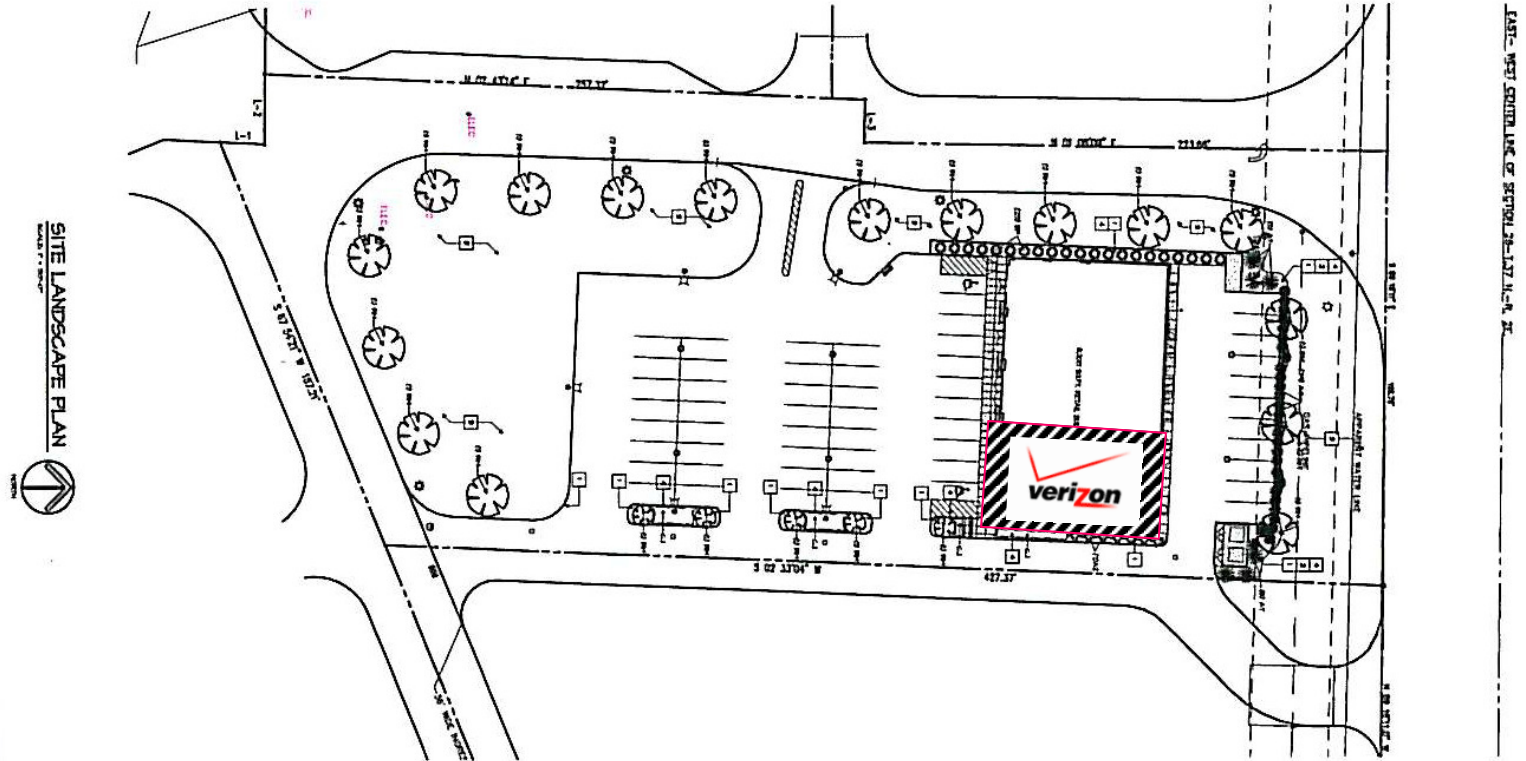
www.brantco.com

For Leasing Info:

Bill Baker
bbaker@brantco.com
219-712-1387
Jeff Brant
jbrant@brantco.com
219-865-9900
The Brant Companies
7651 Harvest Drive
Scherville, IN 46375

Erskine Commons Outlot Prime Retail Space For Lease

E:\Drawings\Brant Commons\14_02\143-1_Landscape Plan



Demographics	
Average HH Income	Estimated Population
1 mile \$51,027	1 mile 4,491
3 mile \$54,347	3 mile 45,776
5 mile \$48,565	5 mile 128,190

www.brantco.com

For Leasing Info:
 Bill Baker
bbaker@brantco.com
 219-712-1387
 Jeff Brant
jbrant@brantco.com
 219-865-9900
 The Brant Companies
 7651 Harvest Drive
 Schererville, IN 46375

This statement, with the information it contains, is given with the understanding that all negotiations relating to the purchase, renting or leasing of the property described above shall be conducted through this office. The above information, while not guaranteed, has been secured from sources we believe to be reliable.